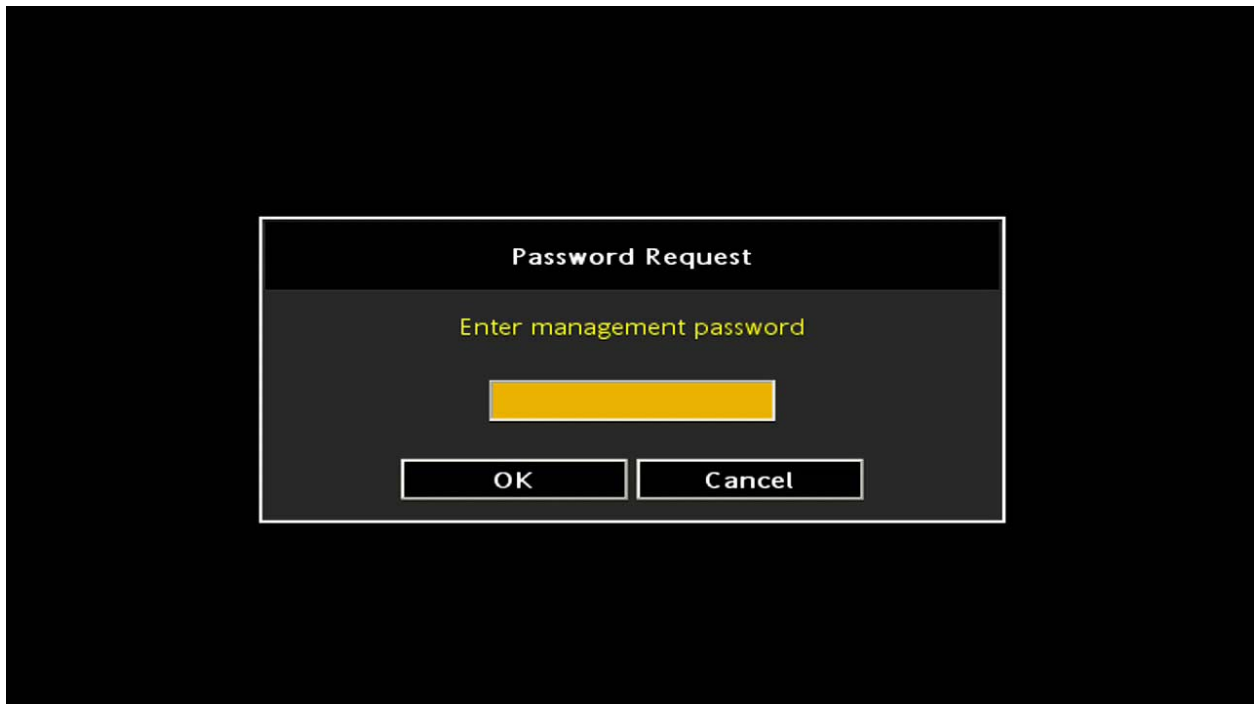


Changing the NTP time server

1. Press the Alt-M keys to display the management login prompt.



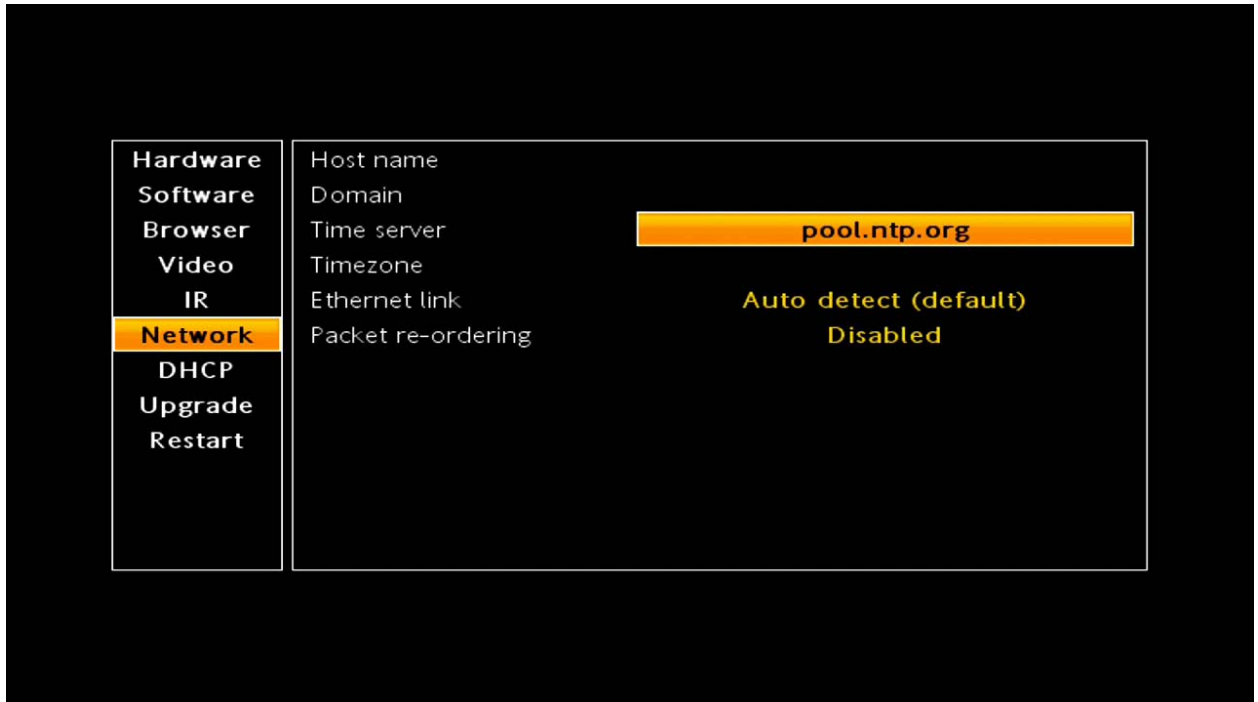
2. Enter *leaves* for the password.

You should then see the main menu.

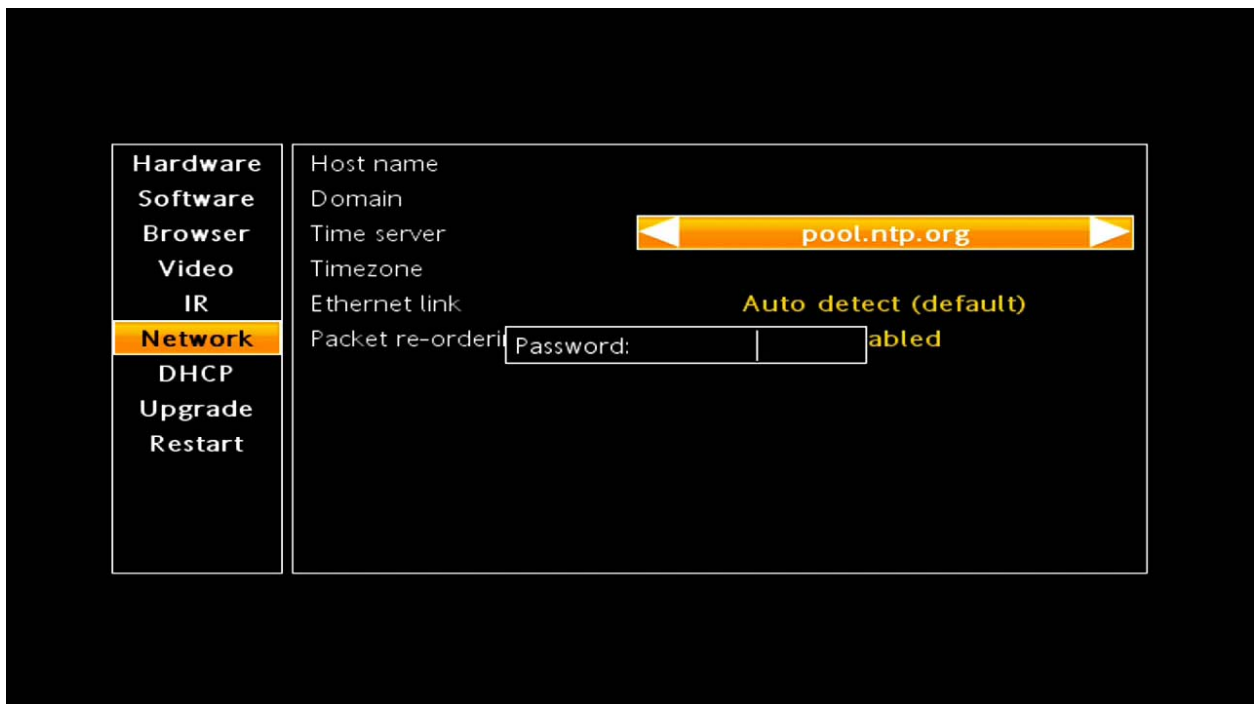
3. Use the arrow keys to select Time server from the Network menu.



4. Enter the time server such as pool.ntp.org



5. Press enter. You should see a password prompt.



6. Enter *snake* as the password.
7. Press the arrow keys to select Restart to reboot the Amino.